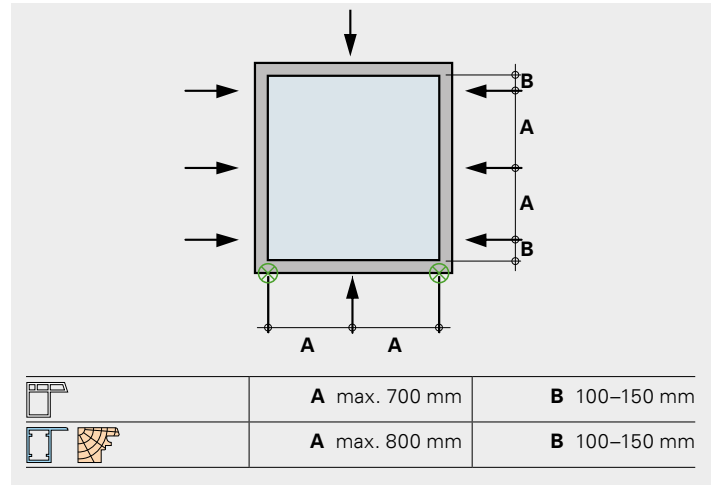
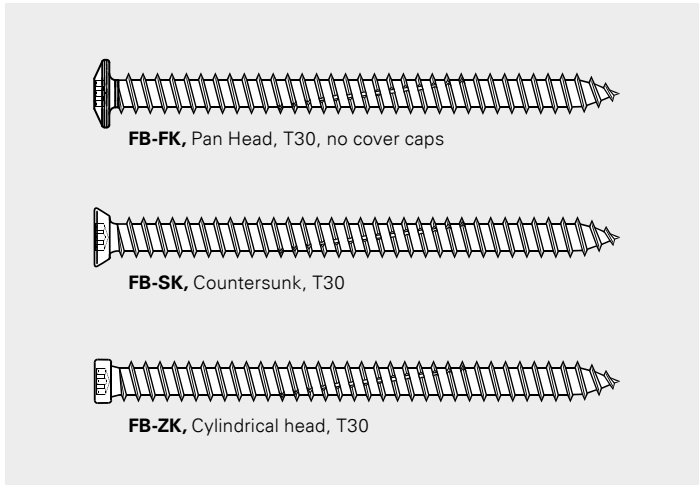
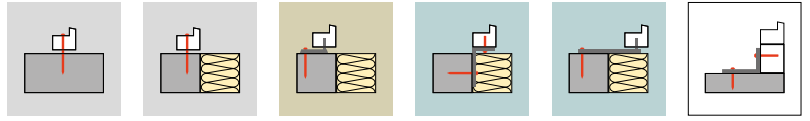
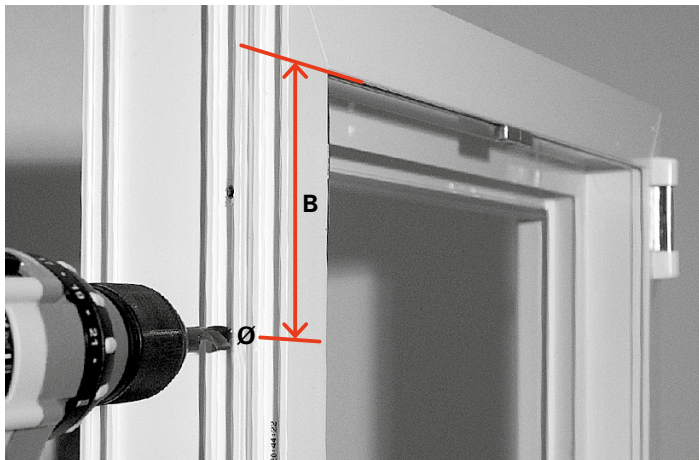


FB-7,5xL



1.

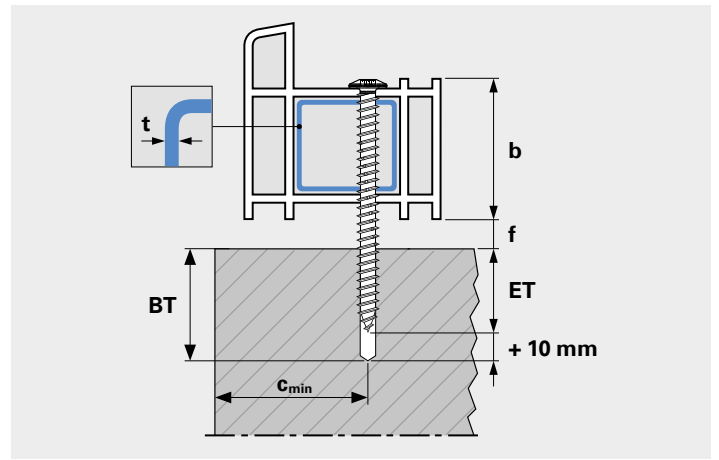


- b** Frame width variable
- f** Joint width Frame to wall 10–20 mm (rec.)
- BT** Drilling depth Screw-in depth +10 mm
- ET** Screw-in depth
- c_{min} Minimum edge distance of 60 mm

Cleaning of the drill holes

Drilling dust or other dirt must be removed from the drill holes.

2.



Pre-drilling \varnothing and insertion depth in various substrates

Substrate	Class	Min. screw-in depth ET _{min.} (mm)	Min. edge distance C _{min.} (mm)	Drill hole \varnothing (mm)	Rotary drilling	Impact drilling
Concrete	C20/25	40 ¹⁾	50	6,0	–	x
Lime sandstone	DFK 20	40				
Poroton-TB	DFK 6	235	100	5,5	x	–
Poroton-TB-P						
Poroton-T10	DFK 8	120				
Poroton-T12	DFK 10			5,0		
Aerated concrete	PP 4	90	80	No pre-drilling	–	
Wood	C 24	40	40	6,0	x	
Steel reinforcem.	–	–	–			

¹⁾ ET min. 40 mm to max. 60 mm, if ET \geq 60 mm, pre-drilling with \varnothing 6,5 mm
Load values change when increasing drill diameter