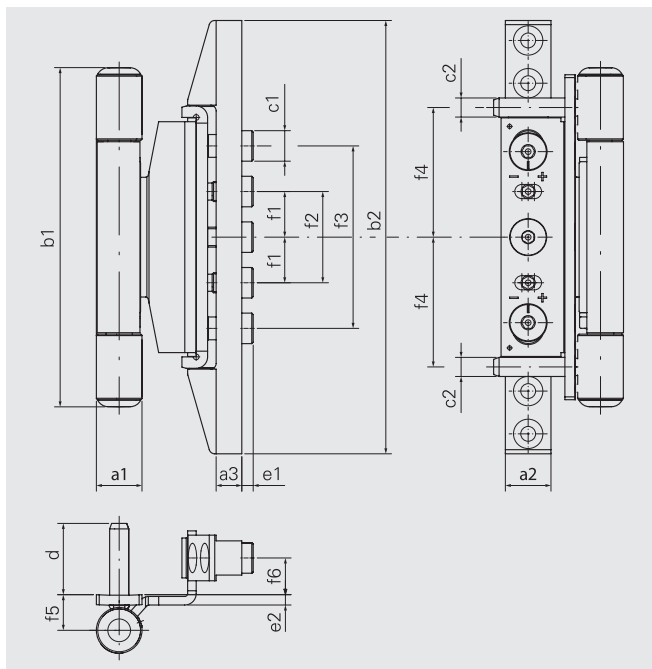


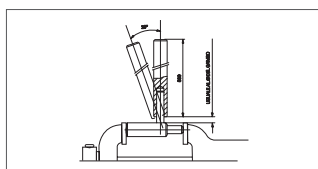
Technical data for hinge

Dynamic 3DN

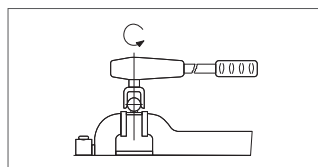
SFS intec



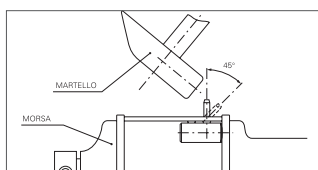
a1:	16 mm	f1:	16 mm
a2:	16 mm	f2:	32 mm
a3:	9 mm	f3:	64 mm
b1:	119 mm	f4:	45,5 mm
b2:	152 mm	f5:	12,5 mm
c1:	10,7 mm	f6:	9/13 mm
c2:	6,7 mm		
d:	10/25 mm		
e1:	4 mm		
e2:	3,6 mm		



After bending the welded bolt through 20° the weld must remain intact (no fracture)



Applying a force to the body of the hinge with a torque meter, the weld should not break before 50 Nm



Impact test with a hammer. After bending the welded bolt through 45° the weld must remain intact (no fracture)

Test in accordance to RAL Norm

Weight of the door with 2 hinges 120 Kg

General Manager:

Signature:

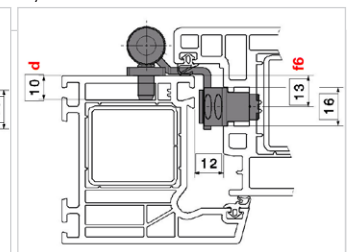
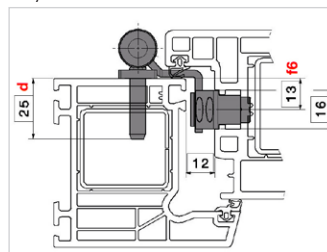
Date 07.02.2018

ISO 9001 : 2008 Quality Management System

Tipo di materiale: Acciaio + Zama

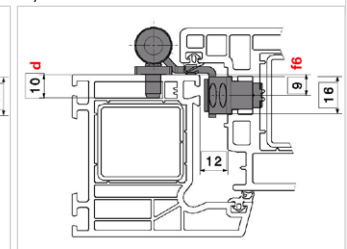
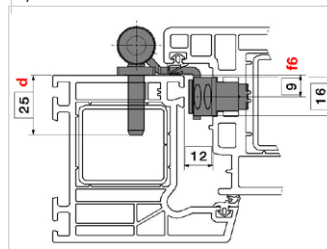
Dynamic 3DN Ø 16 - 00

Dynamic 3DN Ø 16 - 01



Dynamic 3DN Ø 16 - 02

Dynamic 3DN Ø 16 - 03



Material: Steel + Zamak

Finishing

Powder coated

Surface treatment

zinc min. 5 µ
Powder coated
Polyester
min. 100/120 µ

Corrosion resistance in accordance to standard UNI EN 1670

min.1000 hours